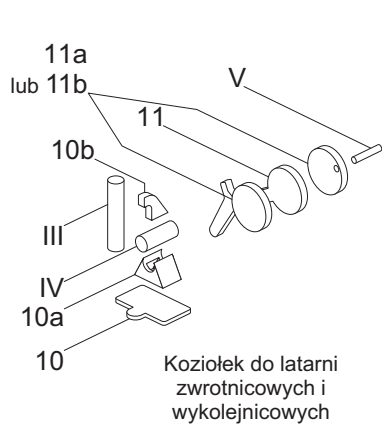
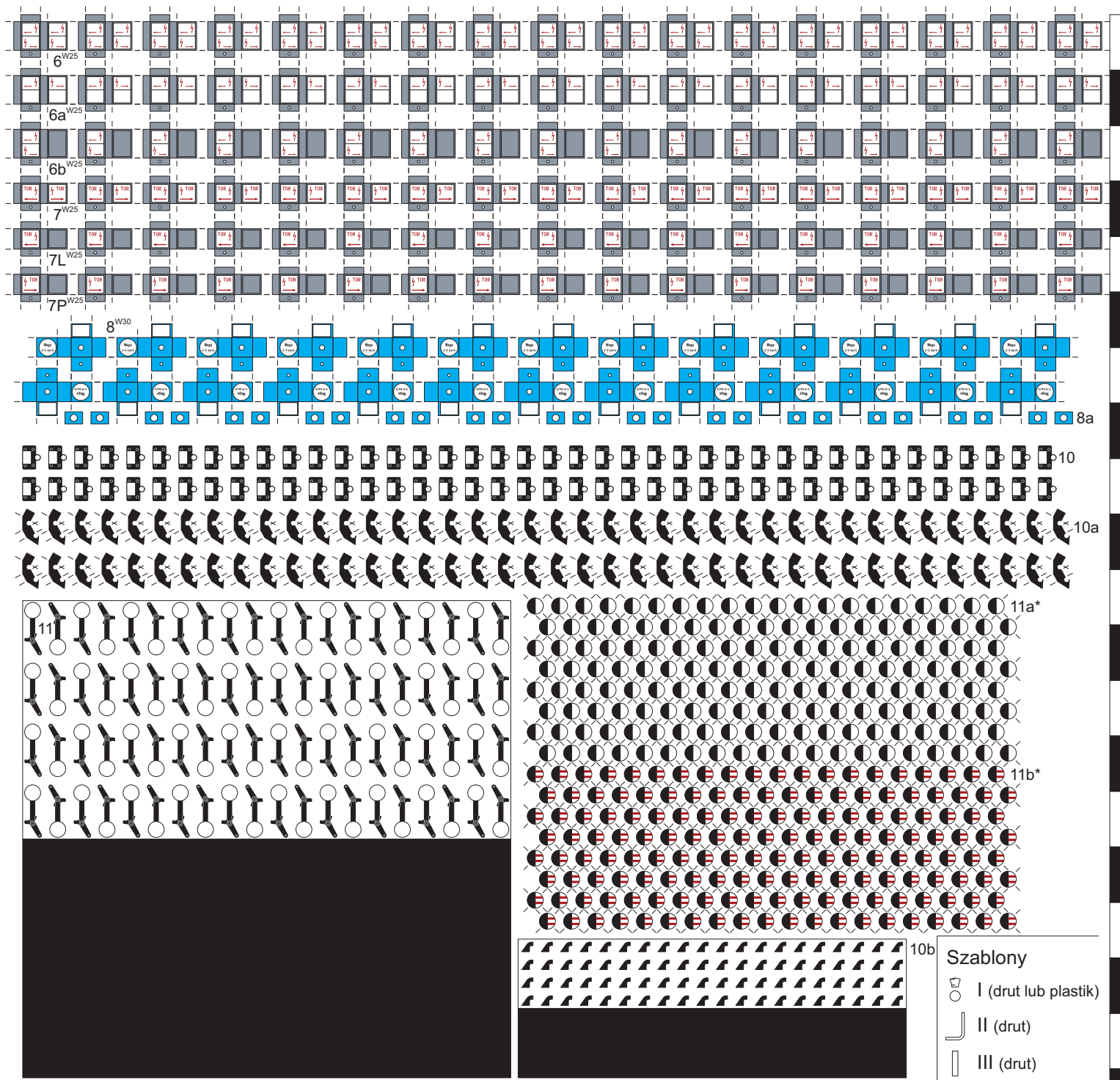
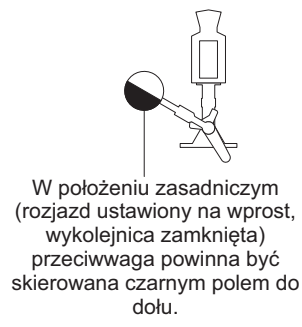
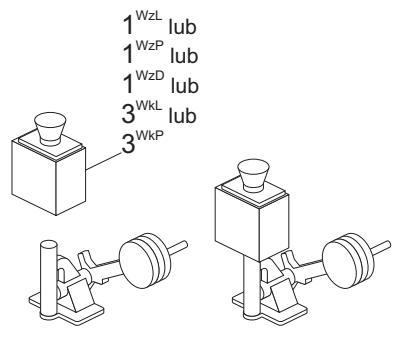


Wskaźniki świetlne PKP, 1959-2014, skala 1:87 (H0)



Koziolatek do latarni
zwrotnicowych i
wykolejnicowych

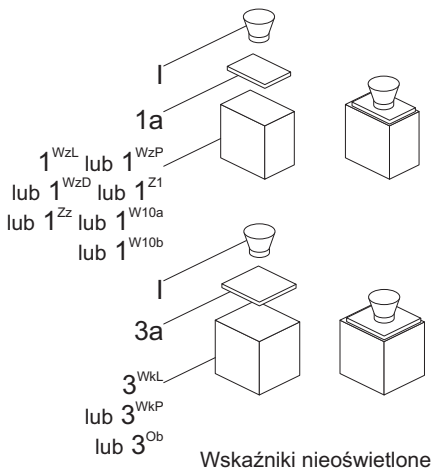


- Szablony
- I (druć lub plastik)
 - ∩ II (druć)
 - ∩ III (druć)
 - IV (druć)
 - V (druć)

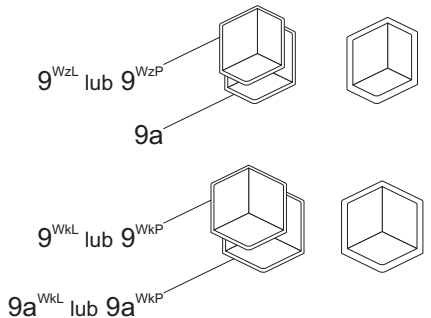
Wskaźniki świetlne PKP, 1959-2014, skala 1:87 (H0)

1cm

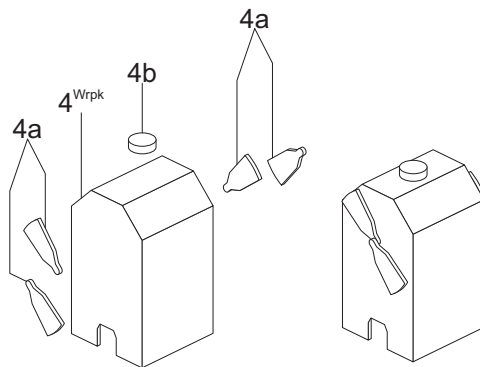
Latarnie zwrotnicowe i wykolejnicowe



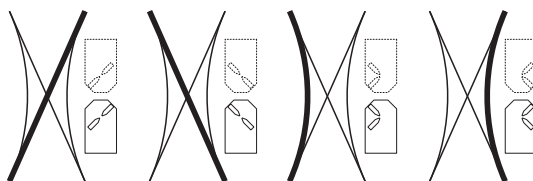
Wskaźniki nieoświetlone



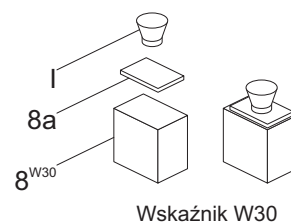
Latarnia Cauera do rozjazdów krzyżowych podwójnych



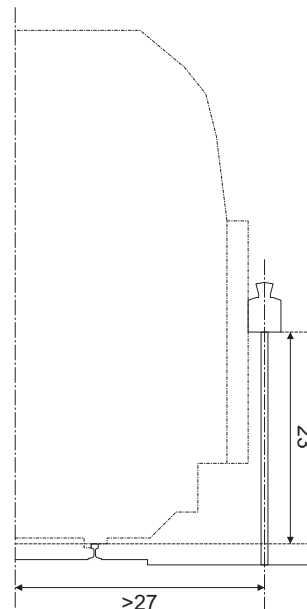
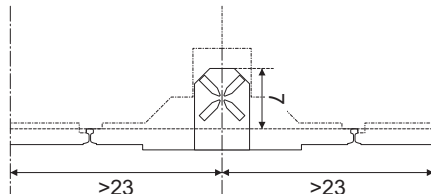
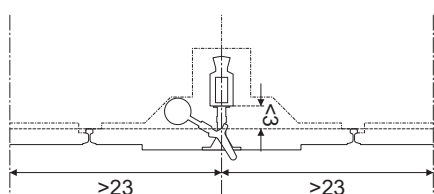
Wskaźniki latarni w zależności od położenia rozjazdu (linią przerywaną narysowano odwrotną stronę latarni). Latarnię umieścić na wysokości środka rozjazdu.



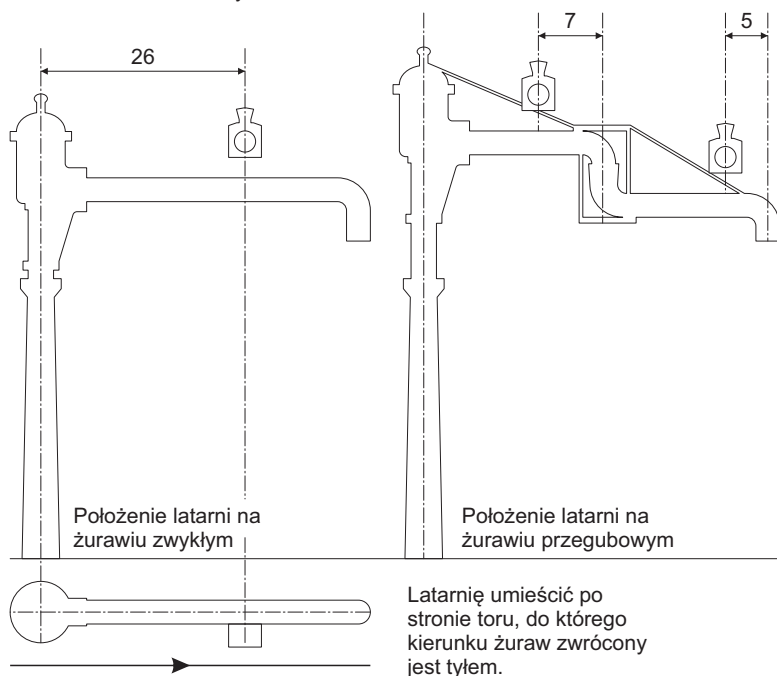
Latarnia na kozioł oporowy, wskaźnik W30



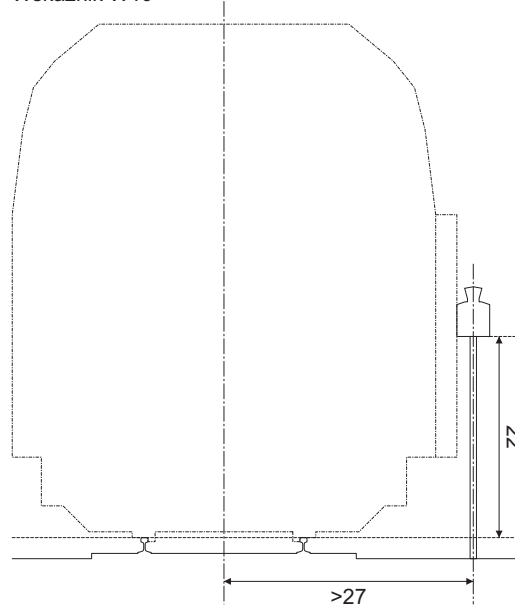
Wskaźnik W30



Latarnia na żuraw wodny



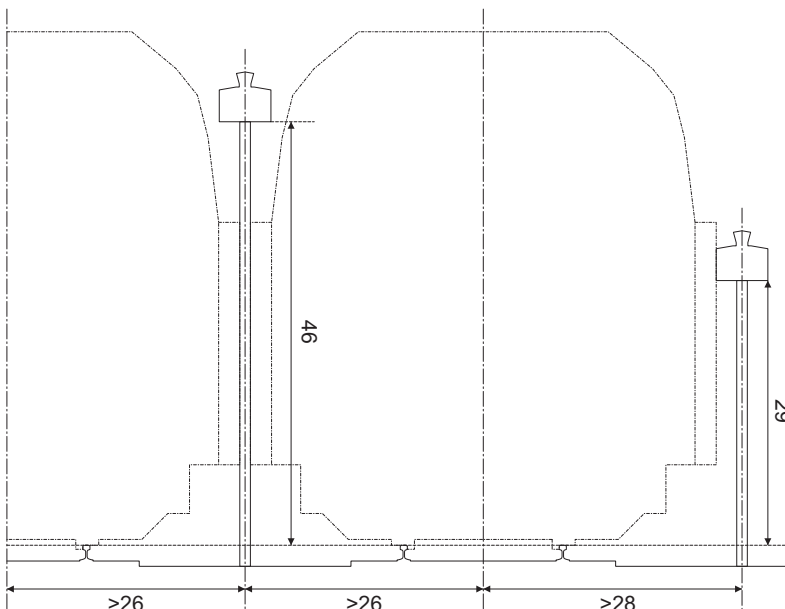
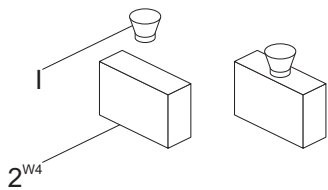
Wskaźnik W10



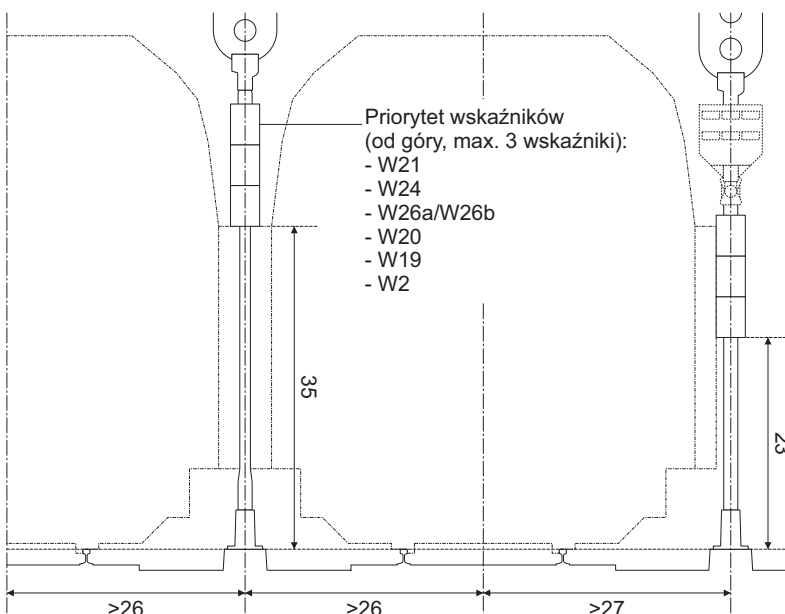
Wskaźniki świetlne PKP, 1959-2014, skala 1:87 (H0)

Instrukcja sklejania 1/2

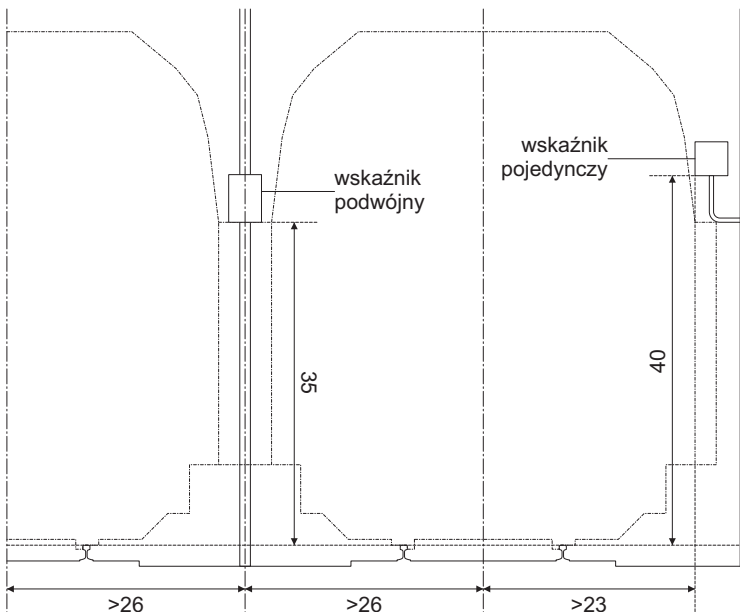
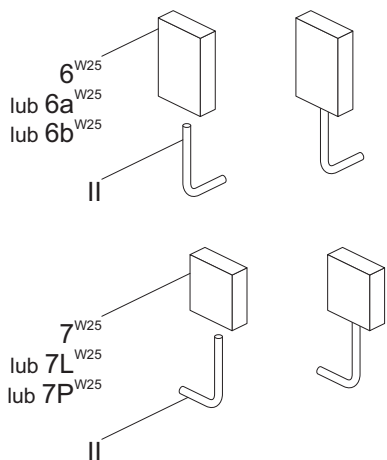
Wskaźnik W4



Wskaźniki W2, W19, W20, W21, W24, W26a, W26b



Wskaźnik W25



Wskaźniki świetlne PKP, 1959-2014, skala 1:87 (H0)

Instrukcja sklejania 2/2