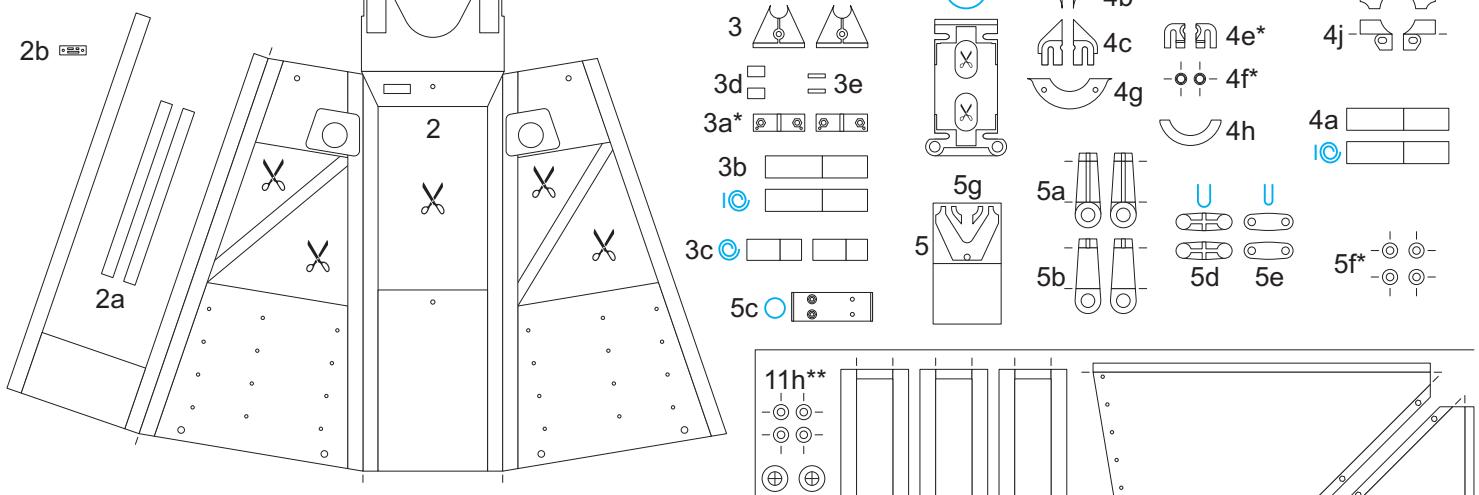


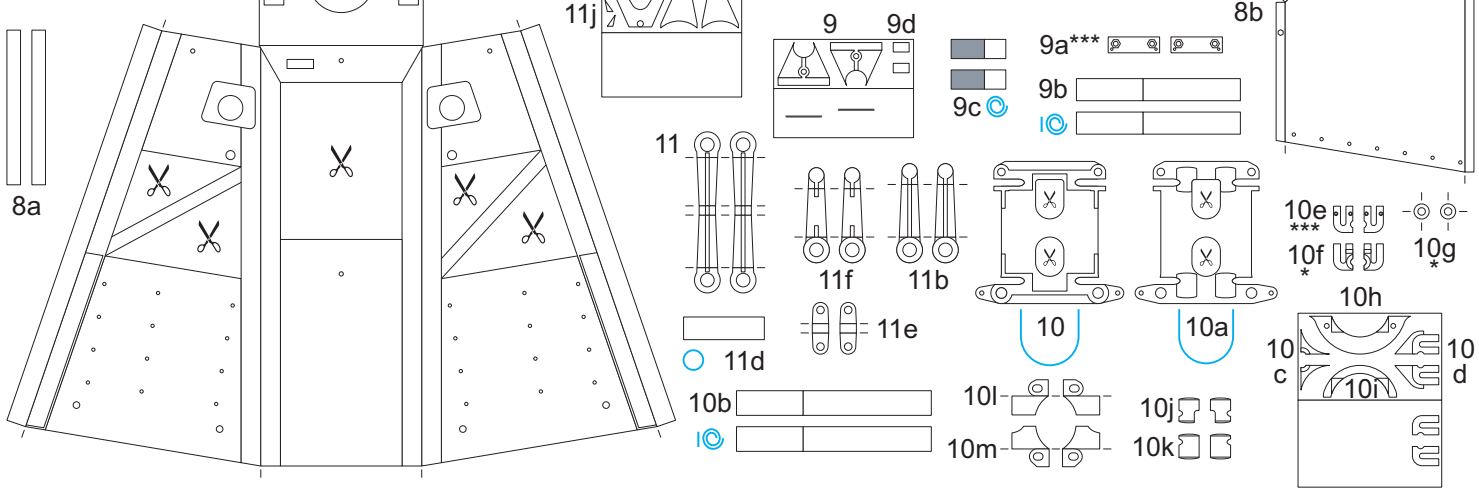


Mechanical boom barrier, Poland/Germany, scale 1:25

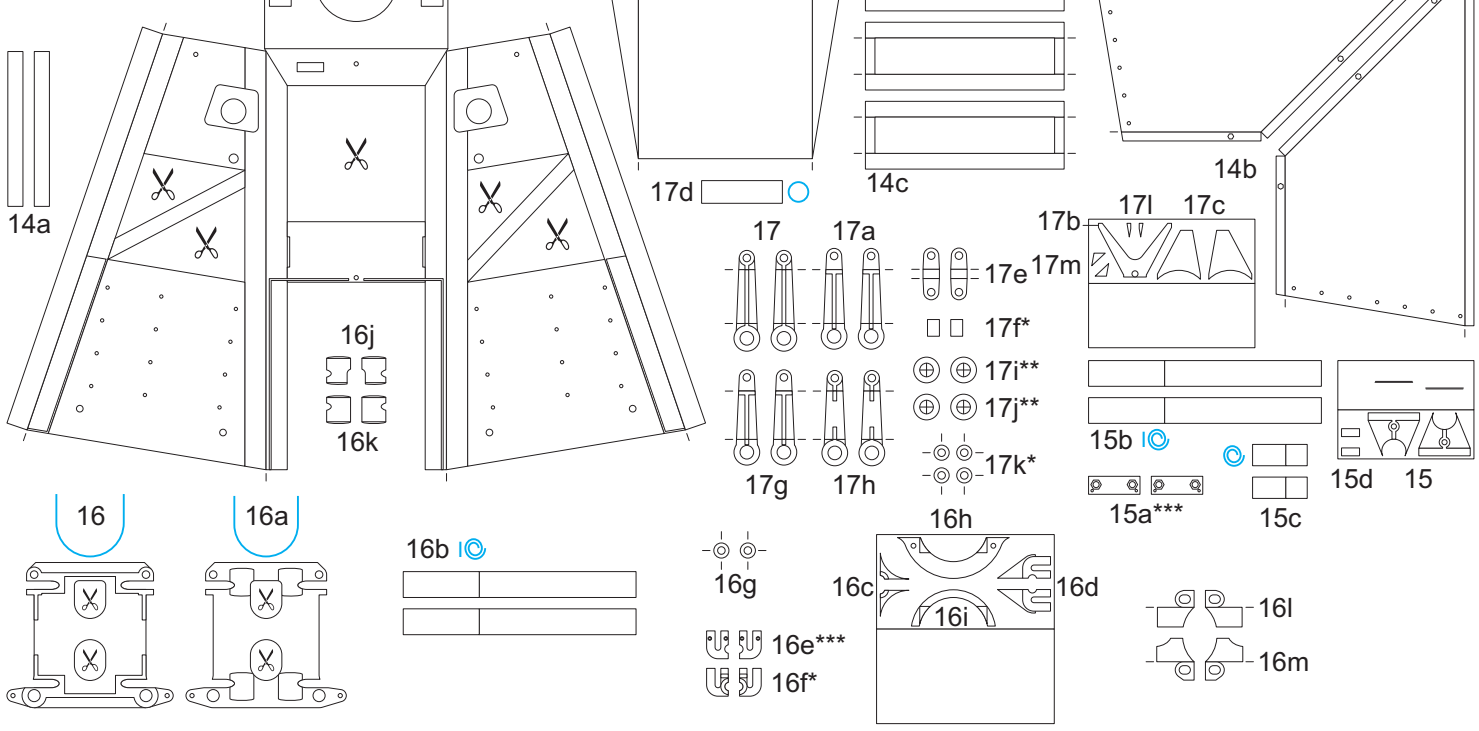
Parts for 2m-5m barrier



Parts for 6m-9m barrier

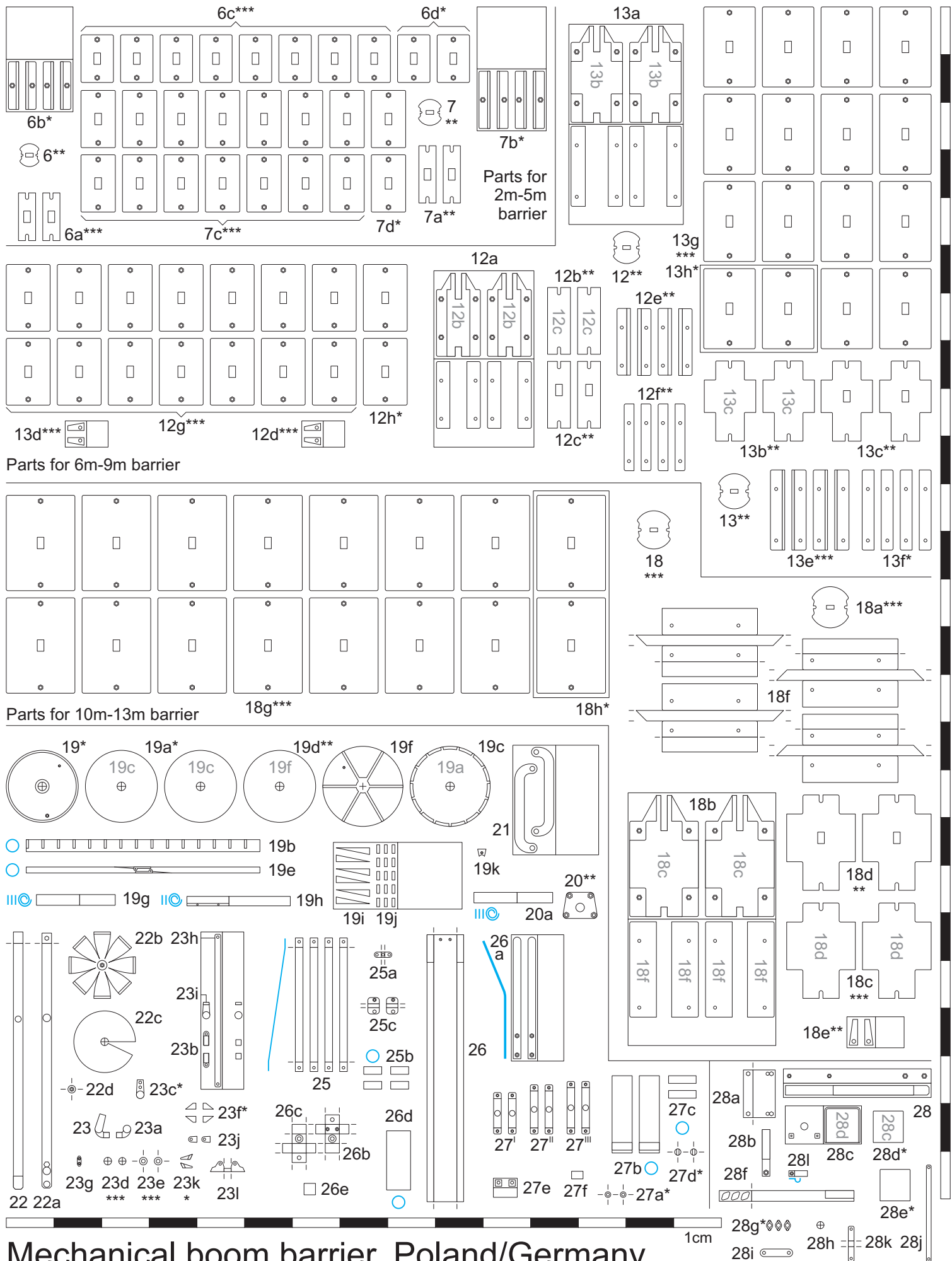


Parts for 10m-13m barrier



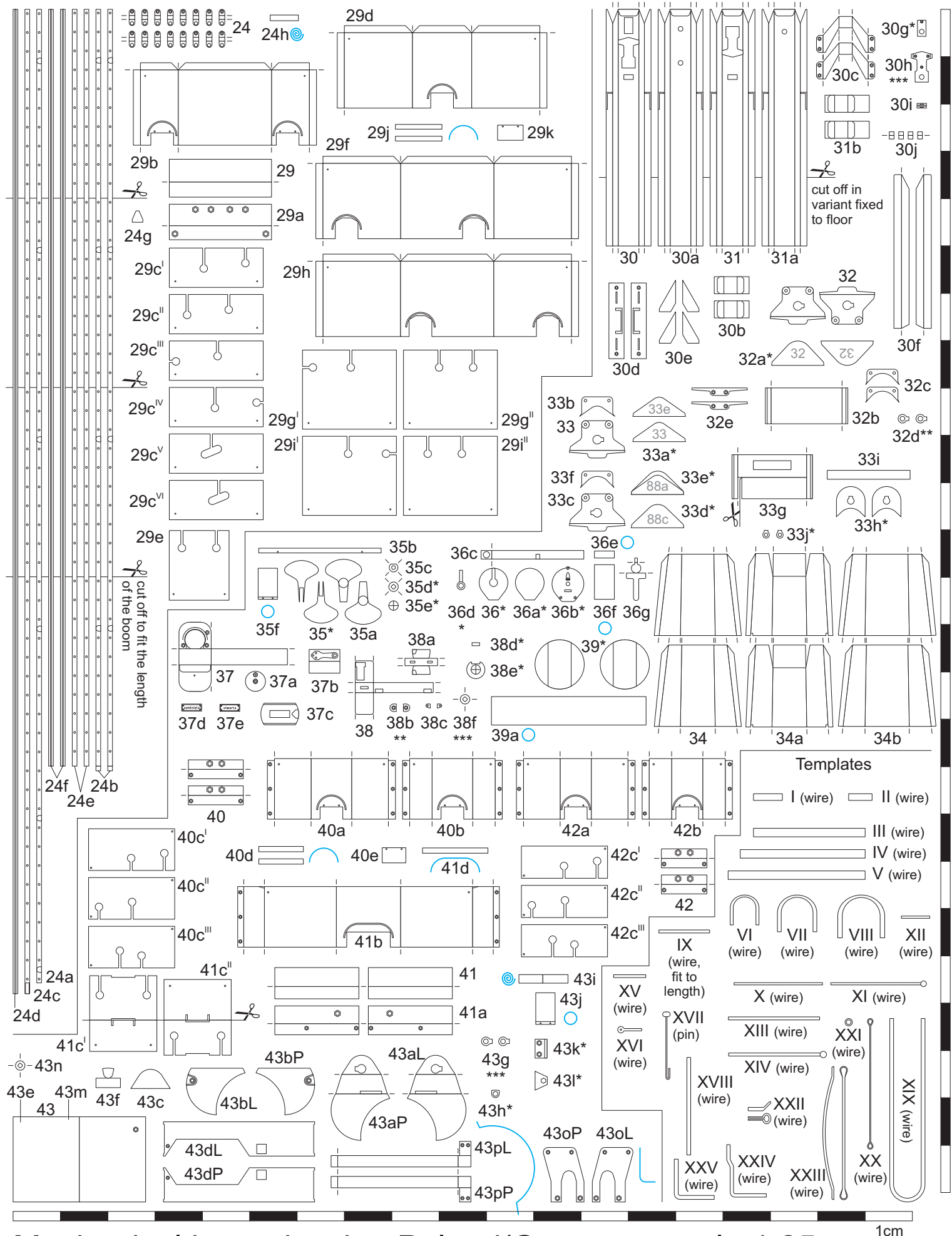
Mechanical boom barrier, Poland/Germany, scale 1:25

1cm

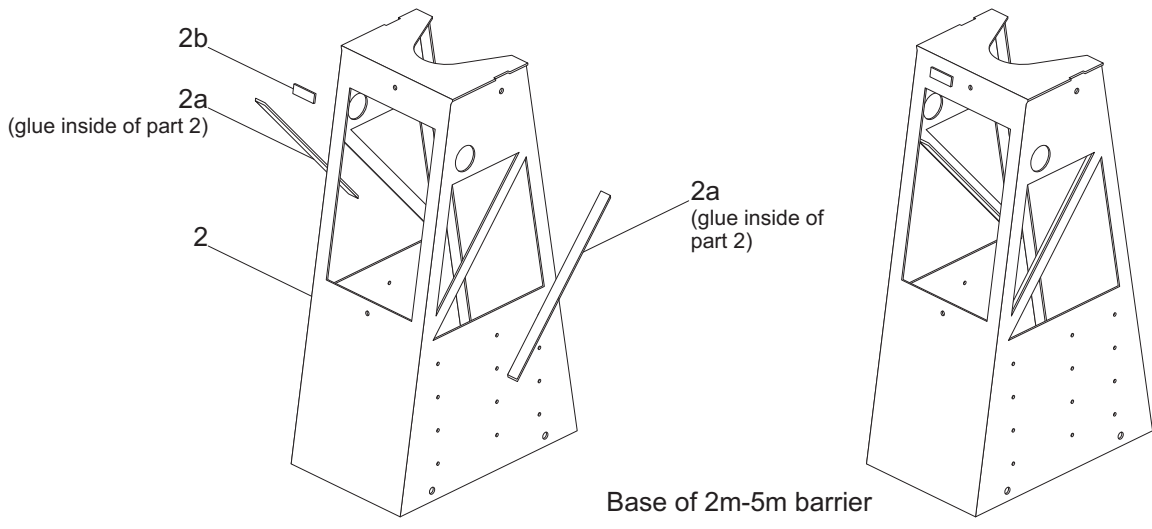


Mechanical boom barrier, Poland/Germany, scale 1:25

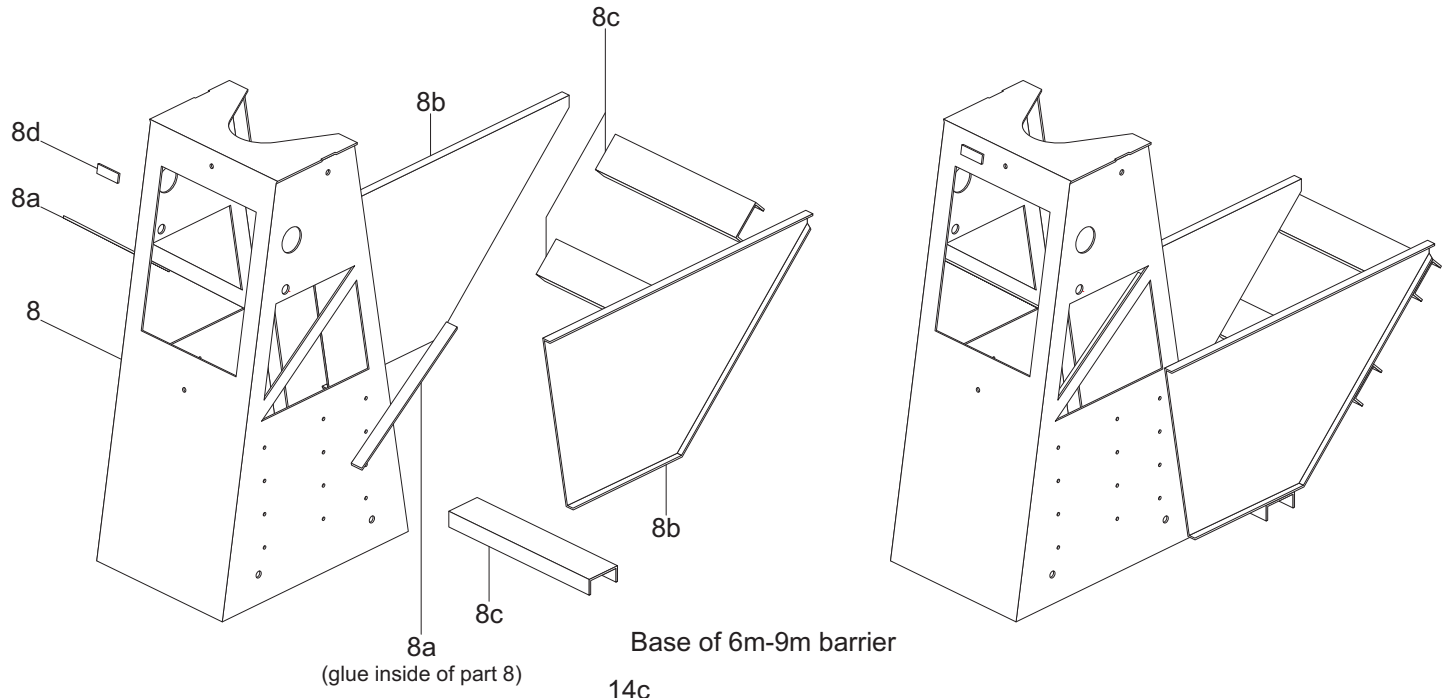
Author: Paweł Adamowicz (<http://pkprepo.net/>), 2016, selected rights reserved



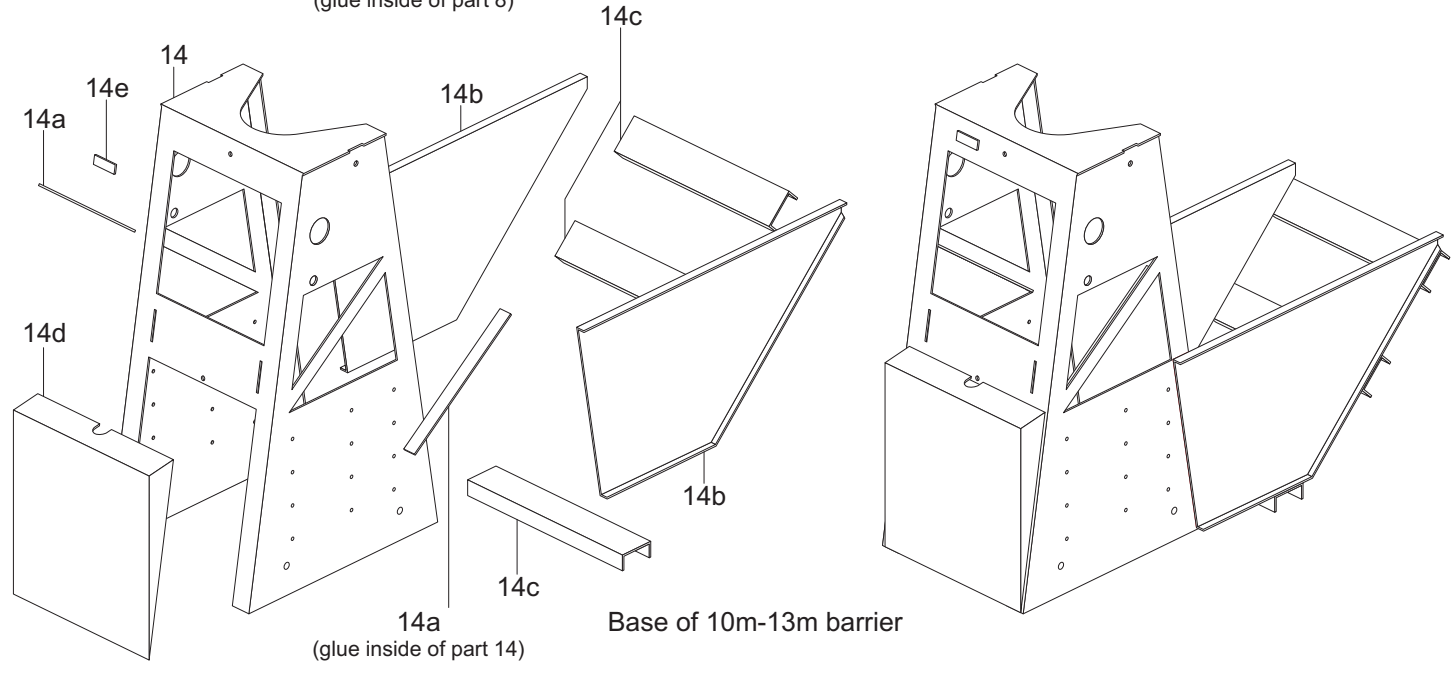
Mechanical boom barrier, Poland/Germany, scale 1:25



Base of 2m-5m barrier



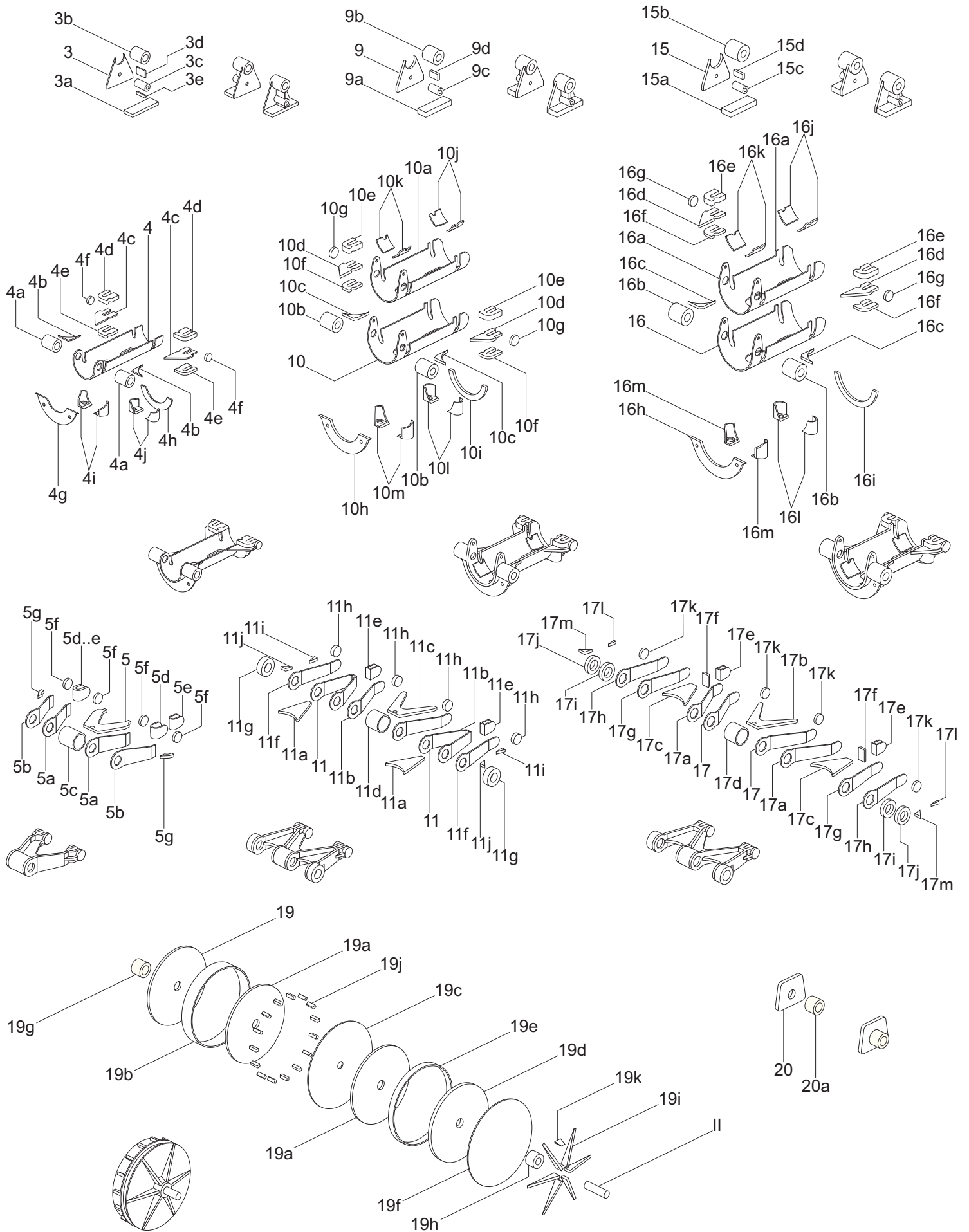
Base of 6m-9m barrier



Base of 10m-13m barrier

Mechanical boom barrier, Poland/Germany, scale 1:25

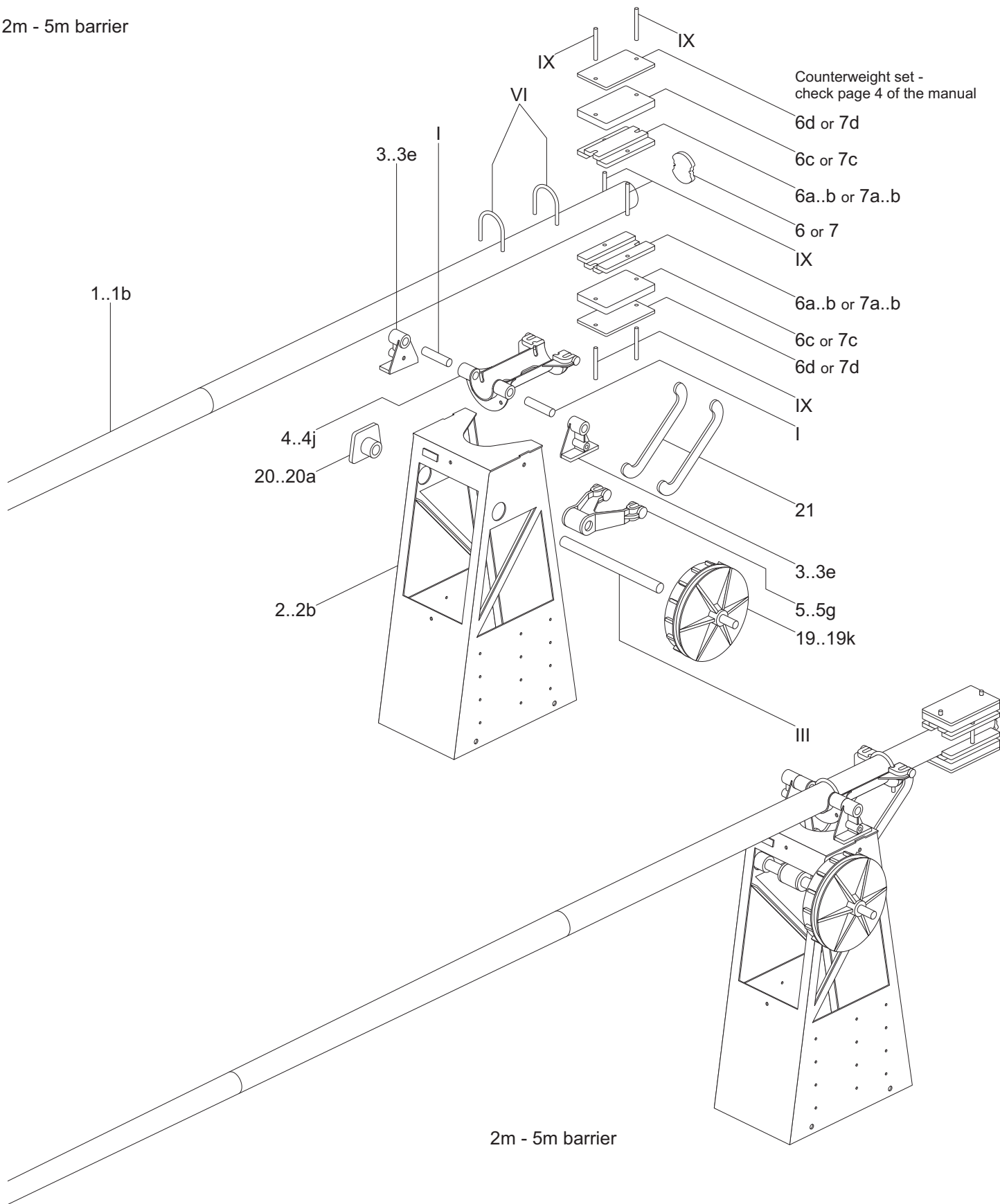
Assembly manual 2/13



Mechanical boom barrier, Poland/Germany, scale 1:25

Assembly manual 3/13

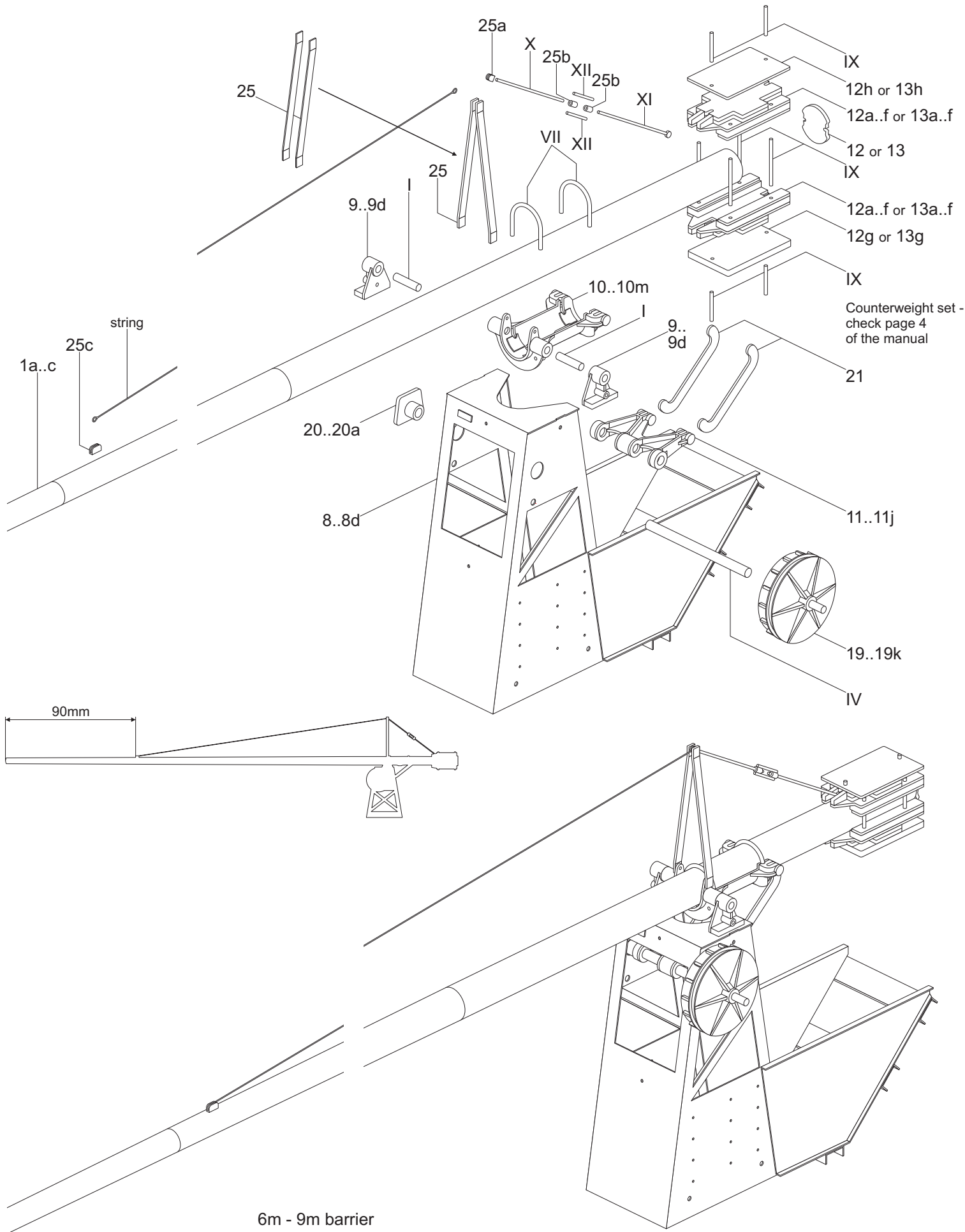
2m - 5m barrier



Mechanical boom barrier, Poland/Germany, scale 1:25


Assembly manual 5/13

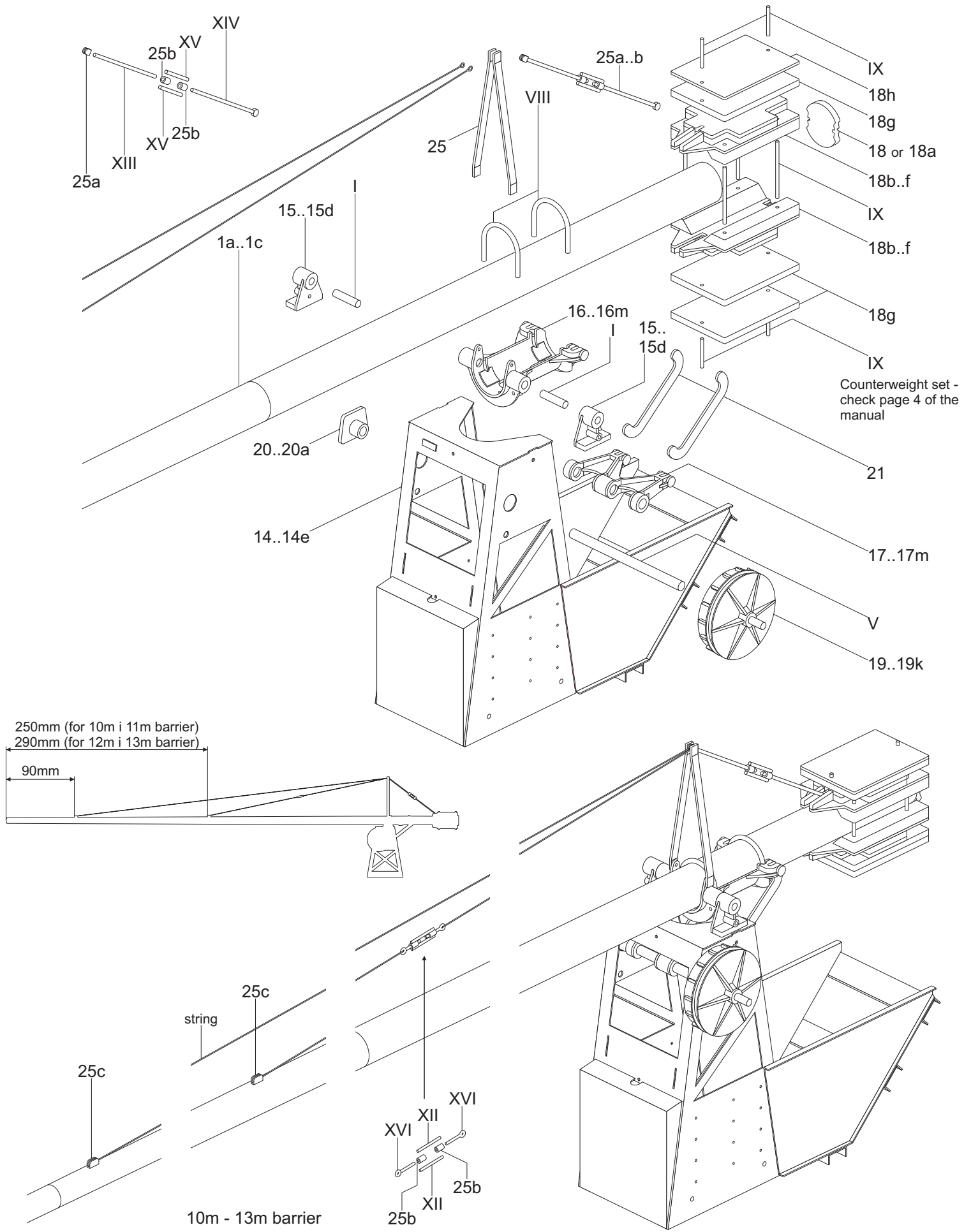
Author: Paweł Adamowicz (<http://pkprepo.net/>), 2016, selected rights reserved



Mechanical boom barrier, Poland/Germany, scale 1:25

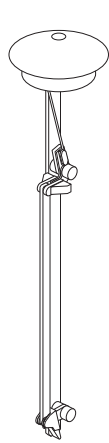
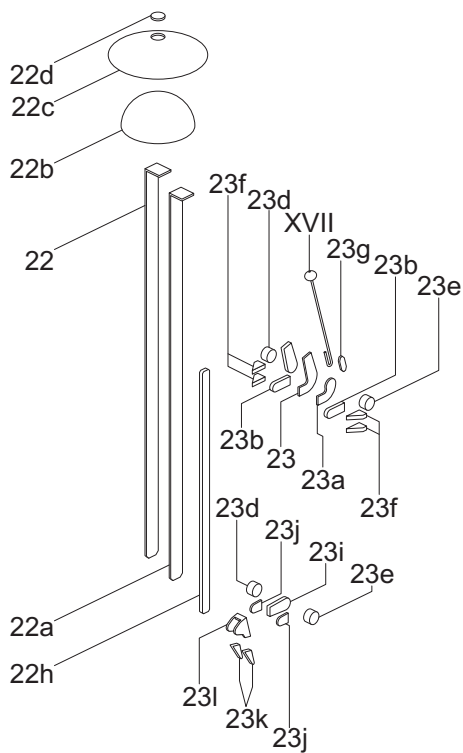
Assembly manual 6/13

Author: Paweł Adamowicz (<http://pkprepo.net/>), 2016, selected rights reserved 

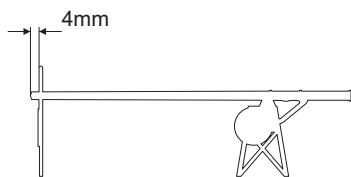
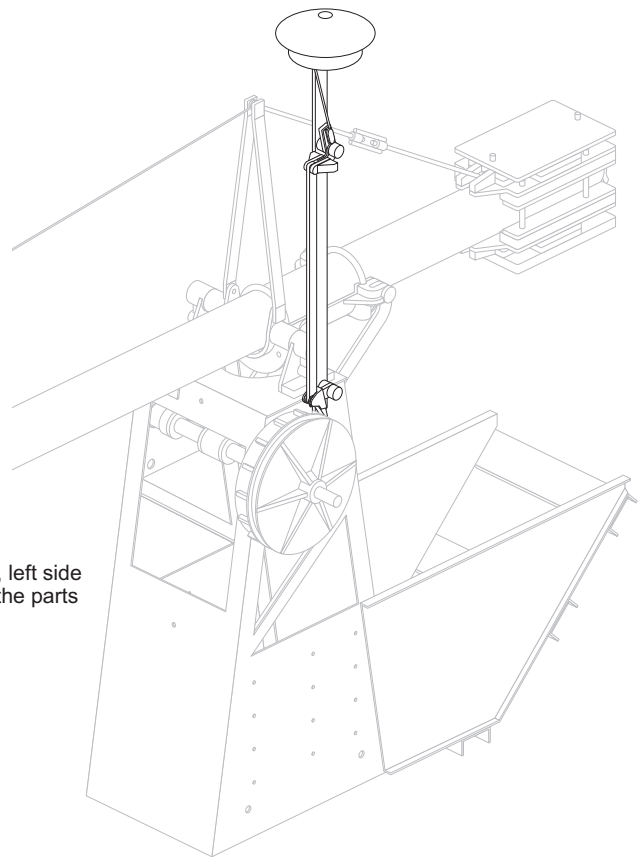


Mechanical boom barrier, Poland/Germany, scale 1:25

Assembly manual 7/13

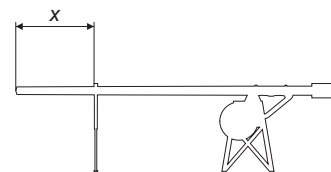


Warning bell
(right-side mounting shown, left side mounting requires glueing the parts mirrored)

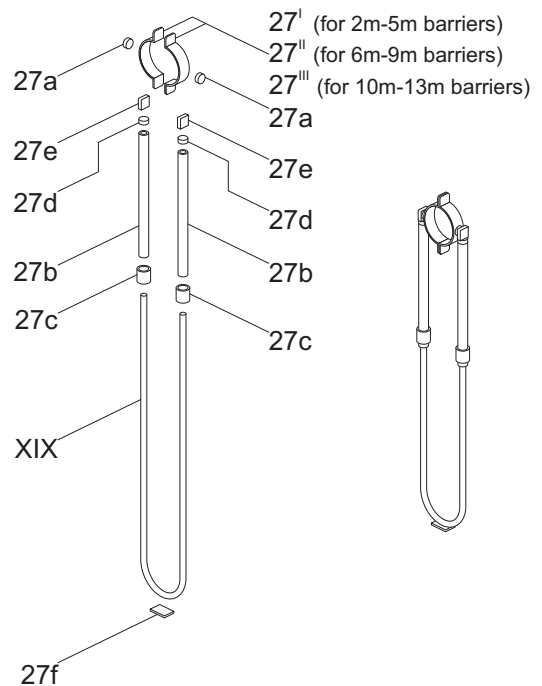
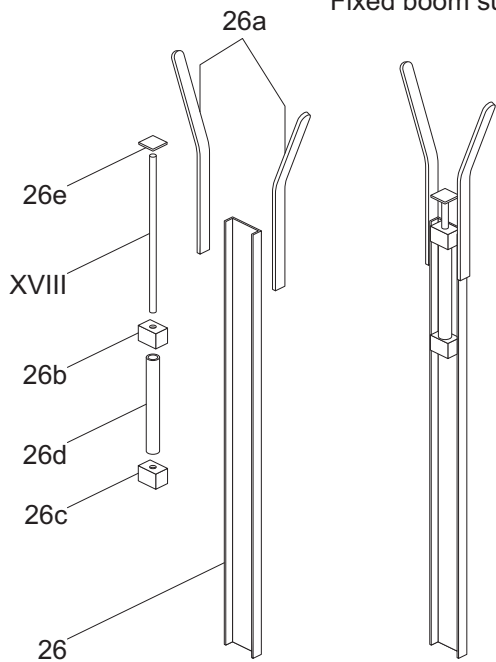


Fixed boom support

Barrier length	x [mm]
2m	34
3m	46
4m	62
5m	74
6m	86
7m	102
8m	114
9m	126
10m	142
11m	154
12m	166
13m	182

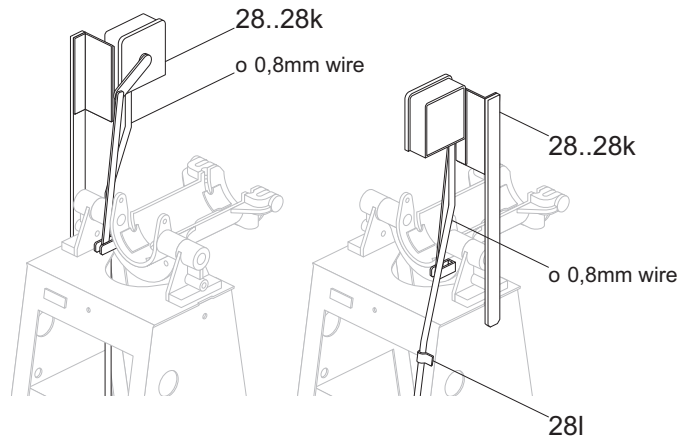
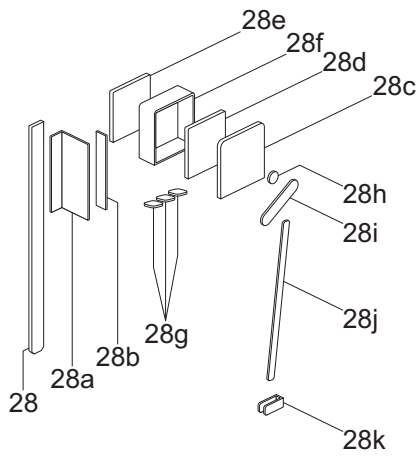


Hinged boom support



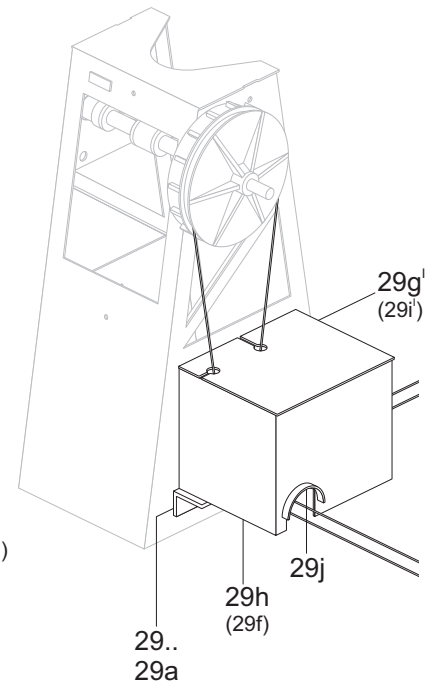
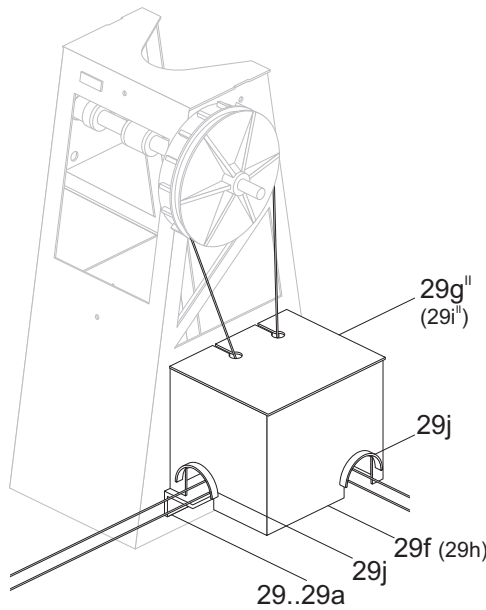
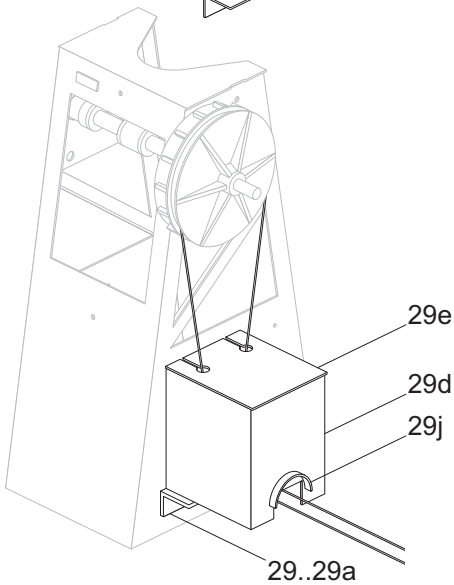
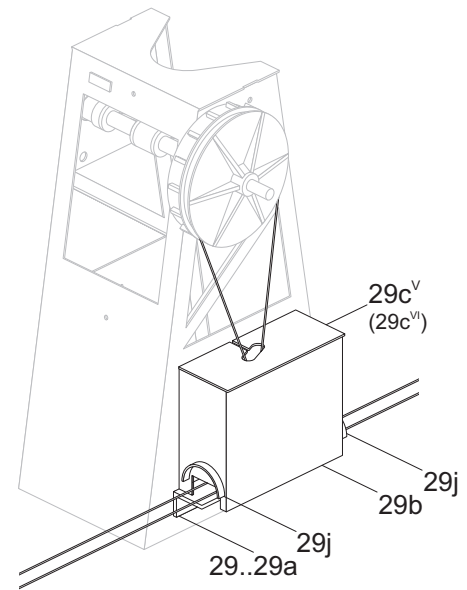
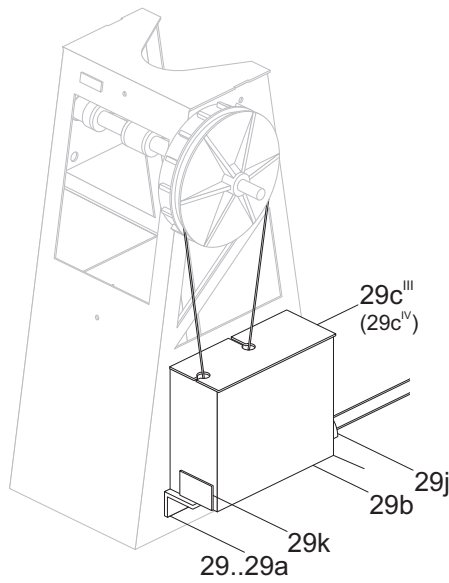
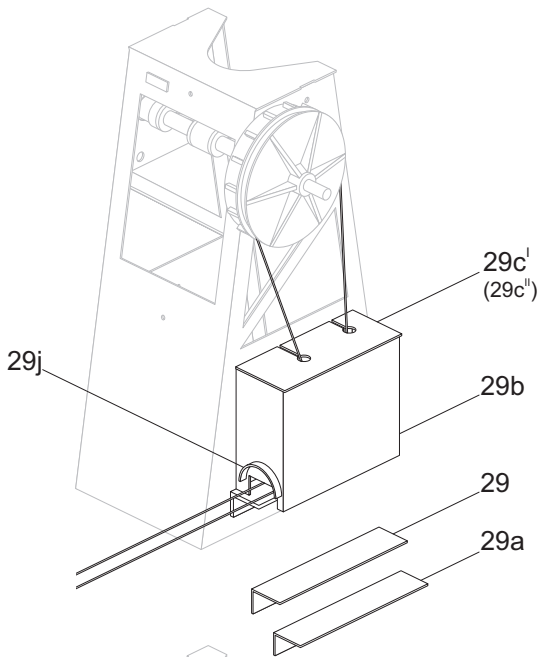
Mechanical boom barrier, Poland/Germany, scale 1:25

Assembly manual 8/13



Signal contact (left- and right-side mounting)

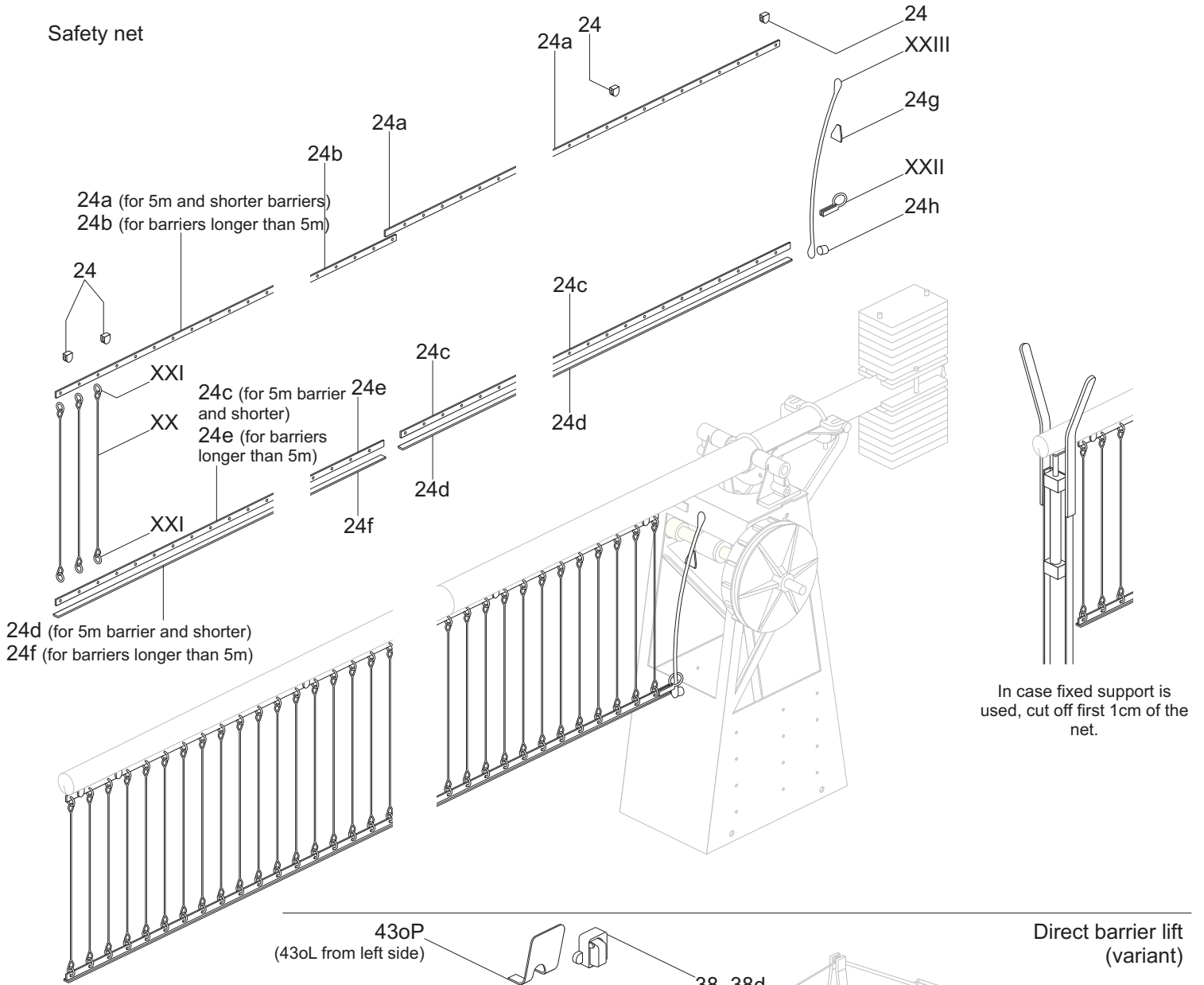
Wire transmission return box
 (right-side mounting shown; left-side mounting mirrored;
 number of parts for left side in brackets)



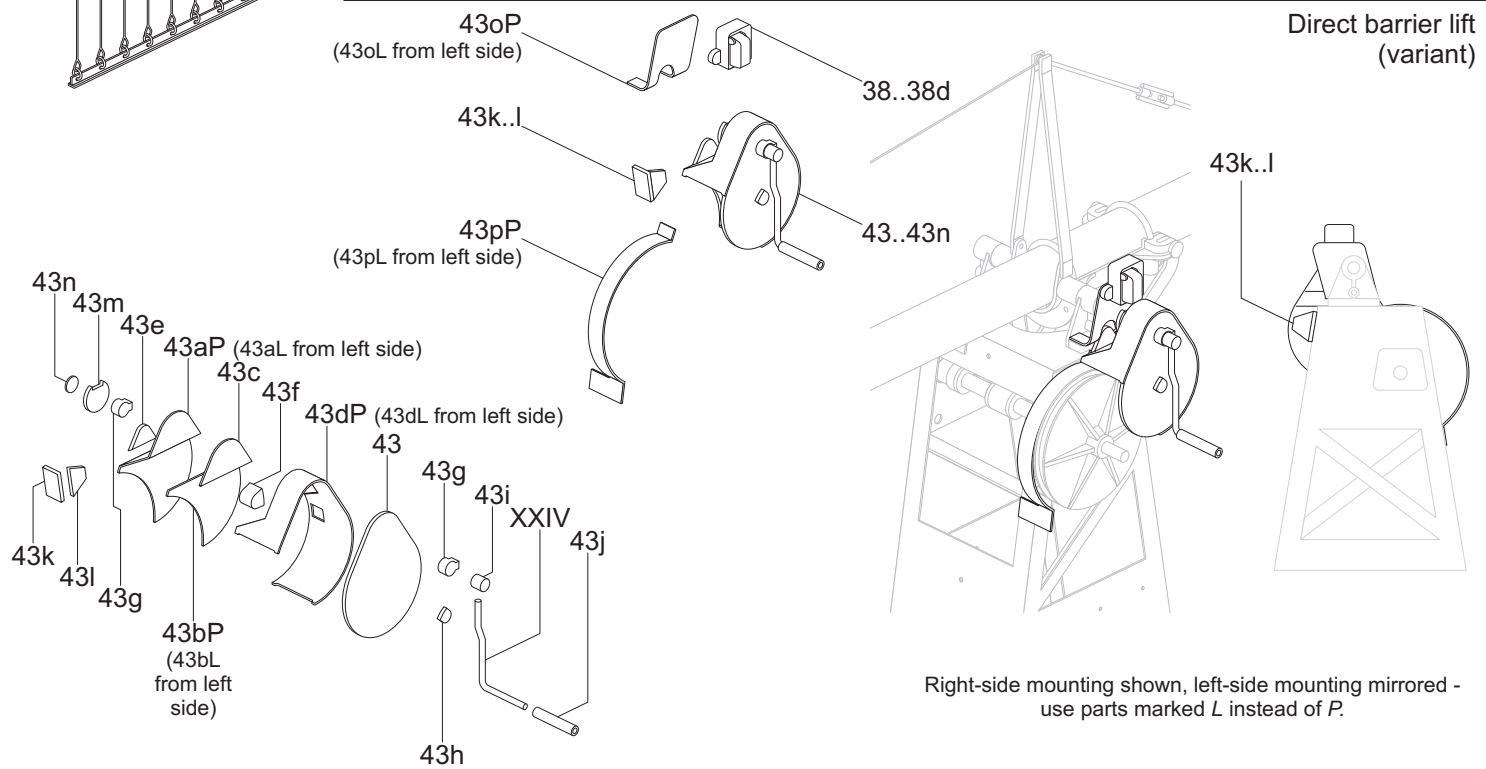
Mechanical boom barrier, Poland/Germany, scale 1:25

Assembly manual 9/13

Safety net



In case fixed support is used, cut off first 1cm of the net.

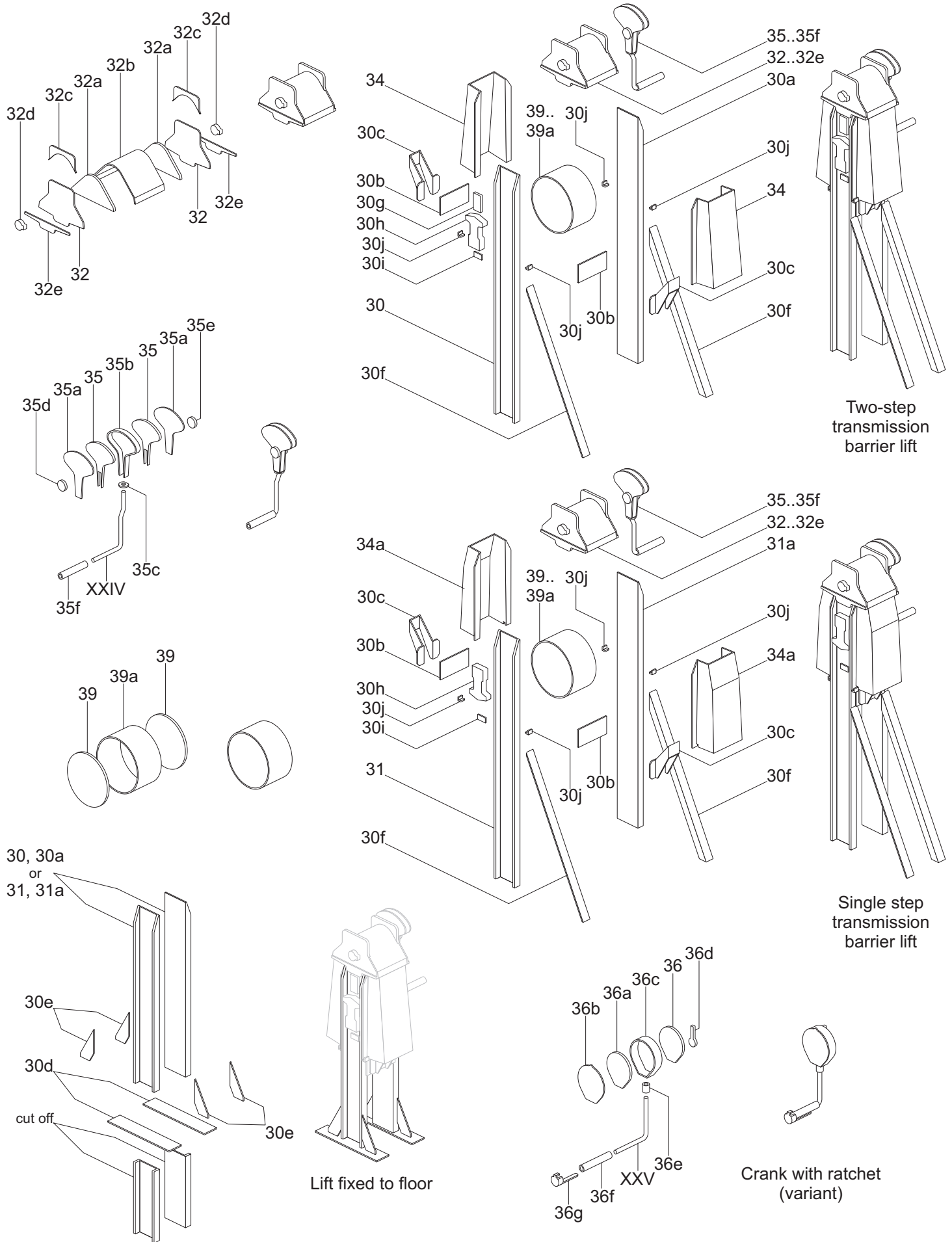


Direct barrier lift (variant)

Right-side mounting shown, left-side mounting mirrored - use parts marked L instead of P.

Mechanical boom barrier, Poland/Germany, scale 1:25

Assembly manual 10/13



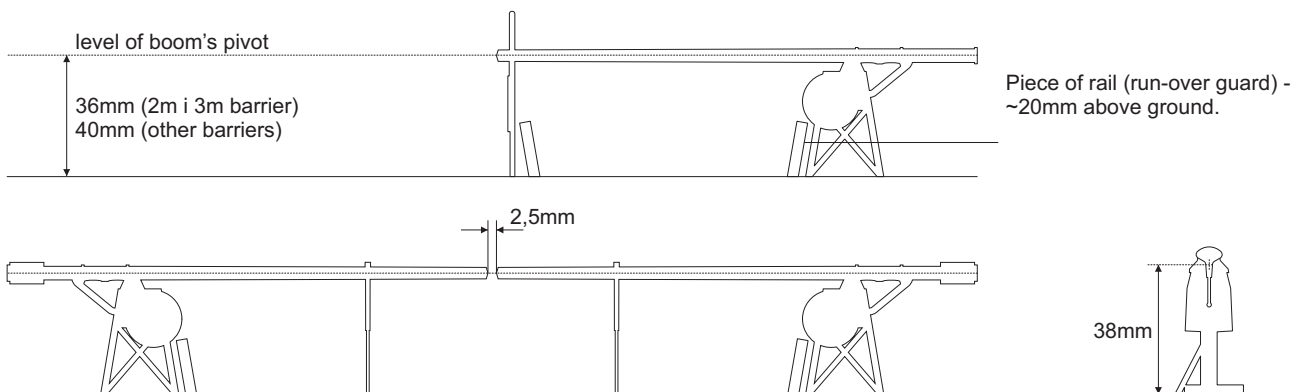
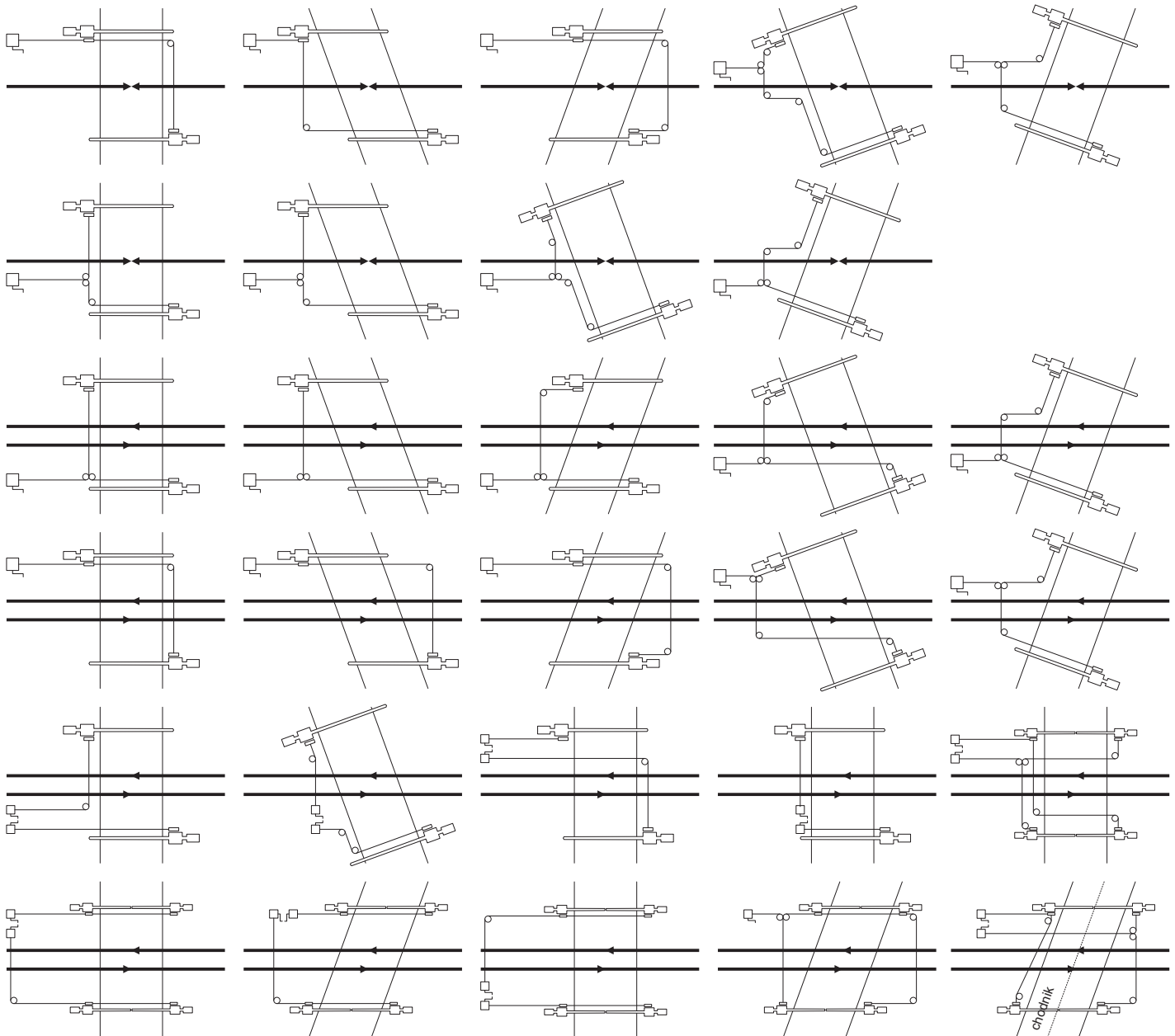
Mechanical boom barrier, Poland/Germany, scale 1:25

Assembly manual 11/13

Examples of barriers and lifts layout on level crossing

General rules:

- In case of single boom barrier, the base (parts 2..2b/8..8d/14..14e) should be located on the right side (looking from the approach to the crossing).
- Barrier drive (parts 19..19k) should be located from the track side.



Mechanical boom barrier, Poland/Germany, scale 1:25

Assembly manual 13/13

Author: Paweł Adamowicz (<http://pkprepo.net/>), 2016, selected rights reserved